

METRIC: DISTANCES AND COORDINATES SHOWN HEREON ARE IN METRES AND CAN BE CONVERTED TO FEET BY DIVIDING BY 0.3048

SCHEDULE

PART	LOT	CONCESSION/PLAN	PIN	AREA
1	PART OF LOT 5	CONCESSION 1	ALL OF 63115-0063(LT)	609.94 sq.m.

I REQUIRE THIS PLAN TO BE DEPOSITED UNDER THE LAND TITLES ACT.

DATE MARCH 30, 2017

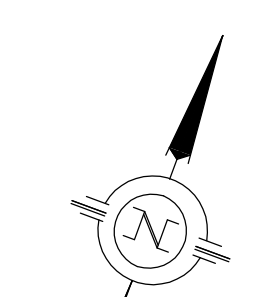
CHRISTOPHER E. MUSCLOW
ONTARIO LAND SURVEYOR

PLAN 57R-

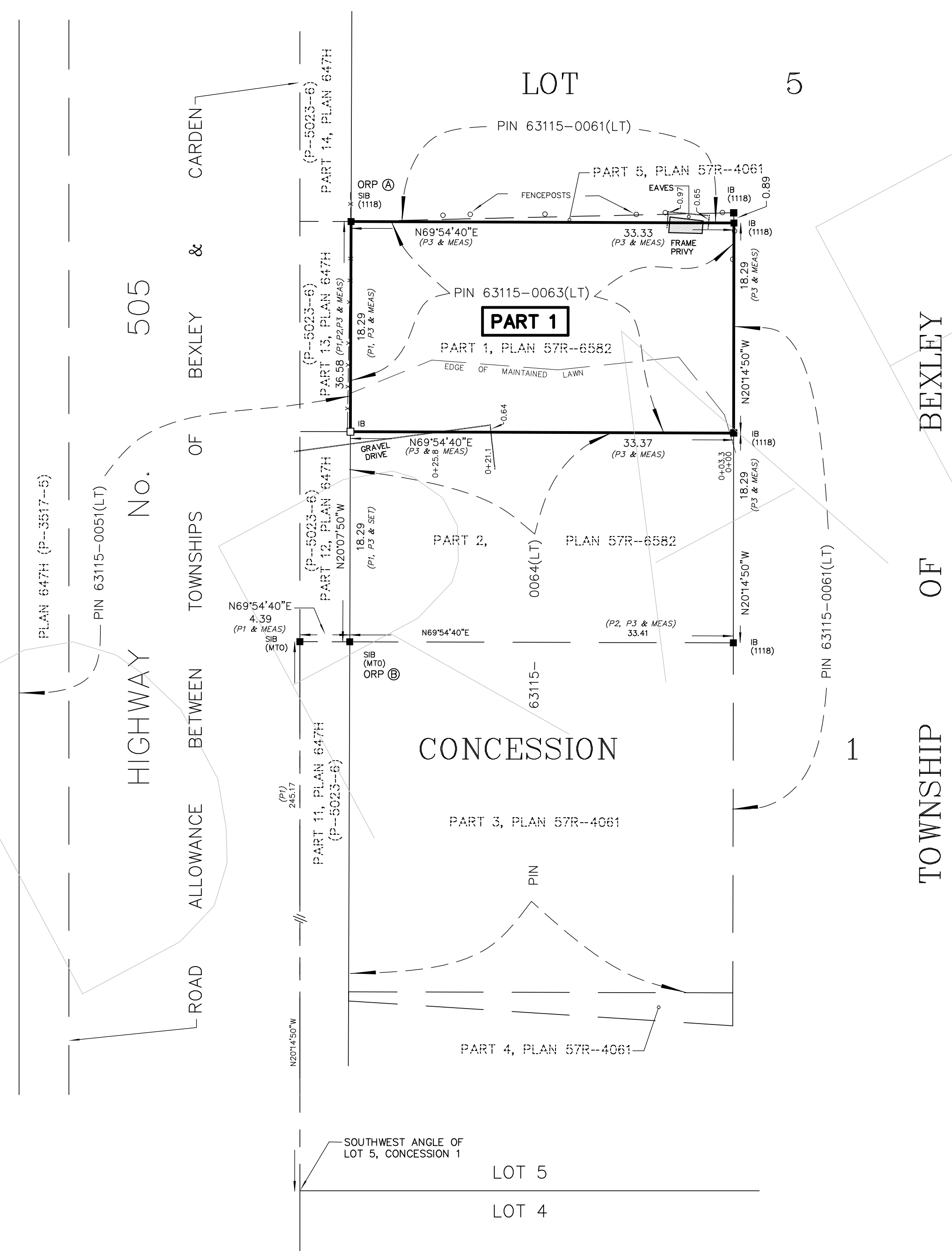
RECEIVED AND DEPOSITED

DATE

REPRESENTATIVE FOR THE LAND REGISTRAR FOR THE LAND TITLES DIVISION OF VICTORIA (No. 57)



LOT 5 CONCESSION 10, TOWNSHIP OF CARDEN



PLAN OF SURVEY OF
PART OF LOT 5
CONCESSION 1
GEOGRAPHIC TOWNSHIP OF BEXLEY
CITY OF KAWARTHA LAKES

COUNTY OF VICTORIA



SCALE: 1:300

SURVEYOR'S CERTIFICATE

I CERTIFY THAT:

- 1) THIS SURVEY AND PLAN ARE CORRECT AND ARE IN ACCORDANCE WITH THE SURVEYORS ACT, THE SURVEYORS ACT AND THE LAND TITLES ACT AND THE REGULATIONS MADE UNDER THEM.
- 2) THE SURVEY WAS COMPLETED ON MARCH 28, 2017.

SIGNED AT LAKEFIELD, ONTARIO
THIS 30th DAY OF MARCH, 2017

CHRISTOPHER E. MUSCLOW
ONTARIO LAND SURVEYOR

LEGEND

- DENOTES SURVEY MONUMENT FOUND
- DENOTES SURVEY MONUMENT PLANTED
- 1118 DENOTES E.G. GURNETT, O.L.S.
- MTO DENOTES MINISTRY OF TRANSPORTATION, ONTARIO
- P1 DENOTES PLAN 648H
- P2 DENOTES PLAN 57R-4061
- P3 DENOTES PLAN 57R-6582

BEARINGS SHOWN HEREON ARE UTM GRID, DERIVED FROM REAL TIME NETWORK (RTN) OBSERVATIONS ON POINTS A AND B LISTED HEREON AND ARE REFERRED TO THE CENTRAL MERIDIAN OF UTM ZONE 17 (81° WEST LONGITUDE) NAD 83 (CSRS EPOCH 1997.0).

FOR BEARING COMPARISONS, A ROTATION OF 1°25'20" COUNTER CLOCKWISE WAS APPLIED TO BEARINGS SHOWN ON PLANS P1, P2 & P3.

DISTANCES SHOWN HEREON ARE GROUND DISTANCES AND CAN BE USED TO COMPUTE GRID DISTANCES BY MULTIPLYING BY A COMBINED SCALE FACTOR OF 0.999885051.

INTEGRATION DATA

COORDINATES ARE DERIVED FROM GPS RTK OBSERVATIONS USING THE TOPNET CORRECTION DATA AND ARE REFERRED TO UTM ZONE 17 (81°W LONGITUDE) NAD83 (CSRS EPOCH 1997.0).

OBSERVED REFERENCE POINT (ORP) COORDINATE VALUES ARE TO 'RURAL' ACCURACY SPECIFICATION IN ACCORDANCE WITH SEC. 14(2) OF O.REG. 216/10

POINT	UTM NORTHING	UTM EASTING
ORP (A)	4942737.83	662637.36
ORP (B)	4942703.49	662649.95

CAUTION: COORDINATES CANNOT, IN THEMSELVES, BE USED TO RE-ESTABLISH CORNERS OR BOUNDARIES SHOWN ON THIS PLAN.



J. B. FLEGUEL SURVEYORS
44 CLEMENTI ST., BOX 70
LAKEFIELD, ON K0L 2H0
PHONE: 705-652-6198
FAX: 705-652-1647
JBFLEGUEL@KAWARTHASURVEYOR.COM
PROJ. # 5508